

## 7-42 PWM1 通訊異常排除方法

### PWM1 Communication error

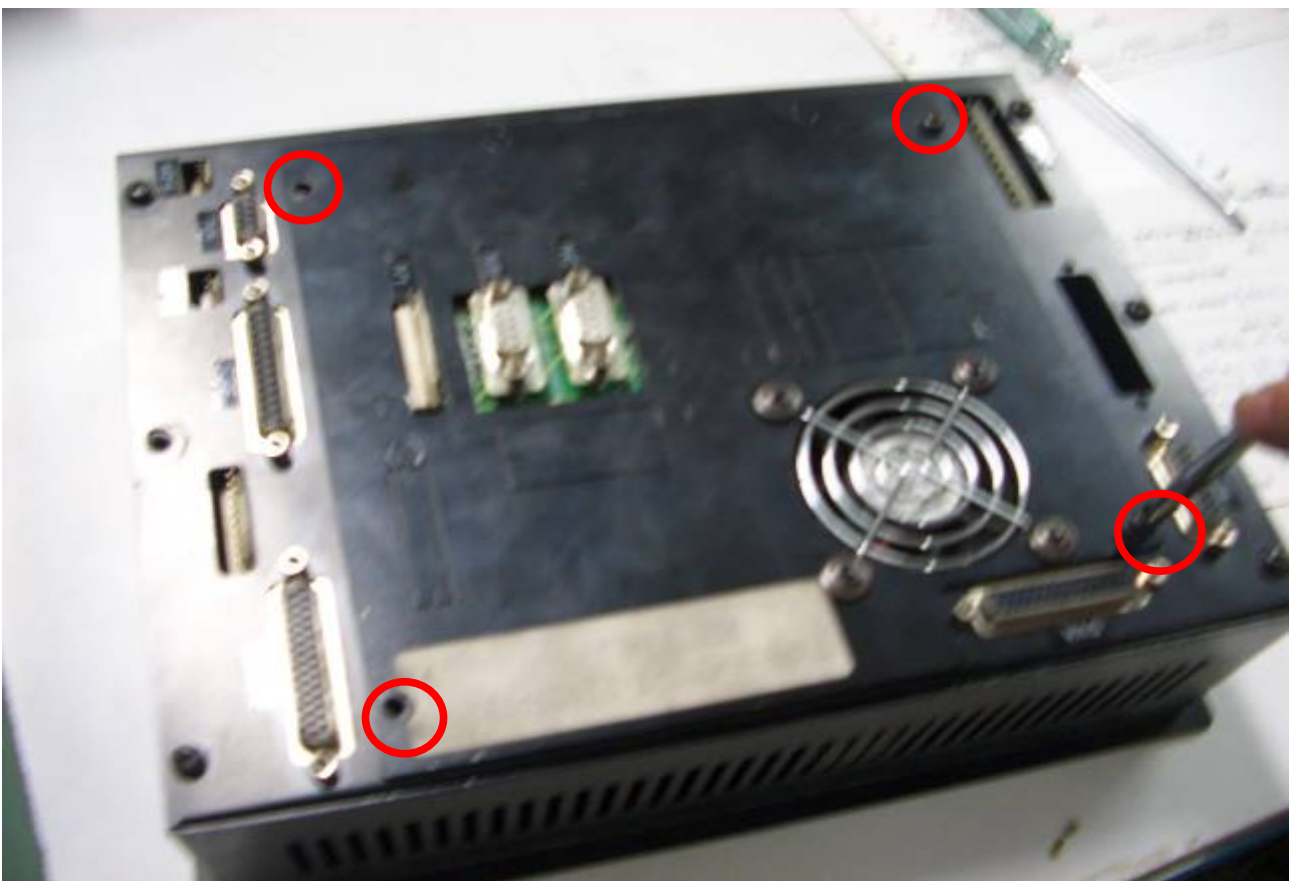


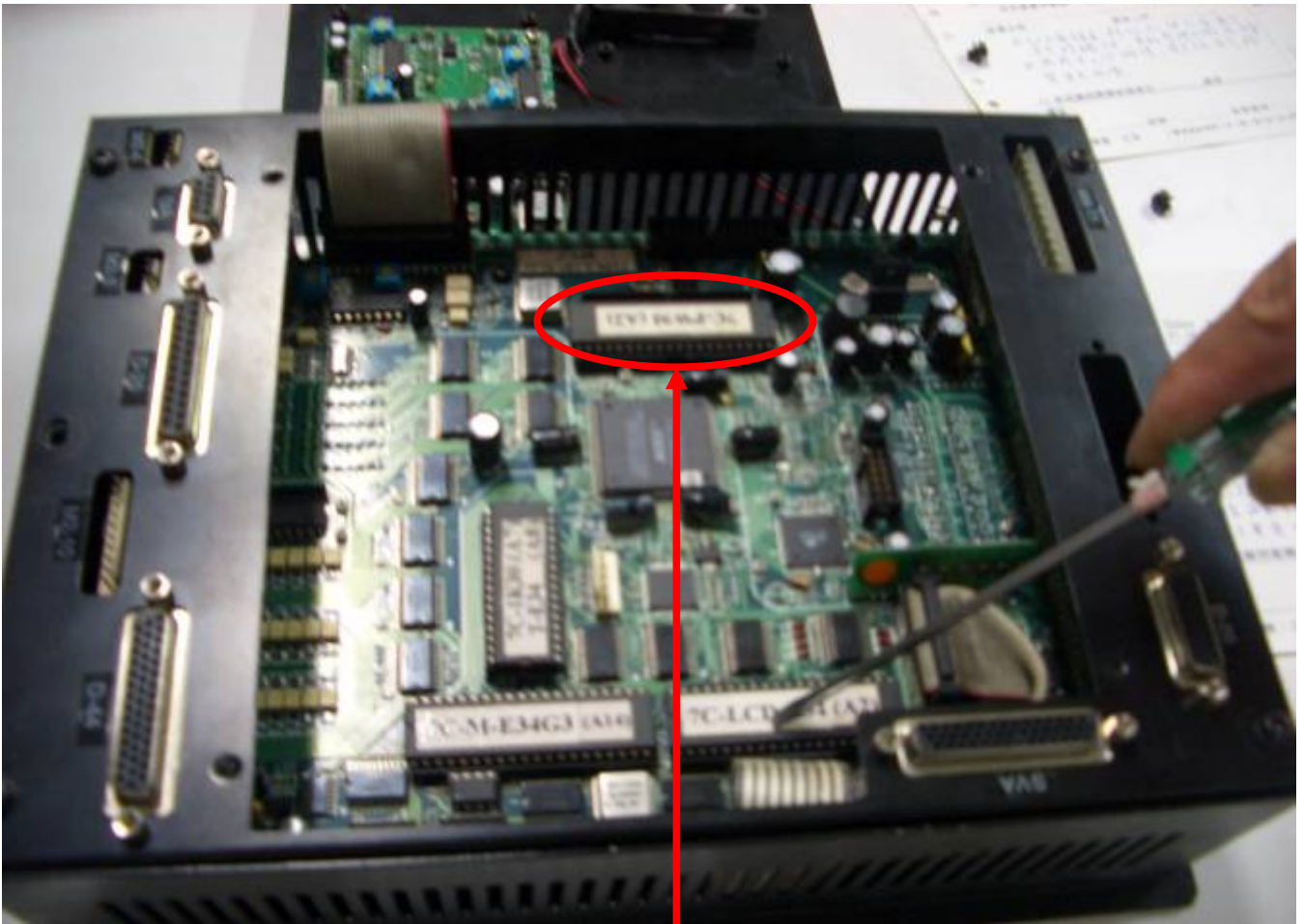
步驟如下：

Please follow the instruction :

請把四個螺絲拆開

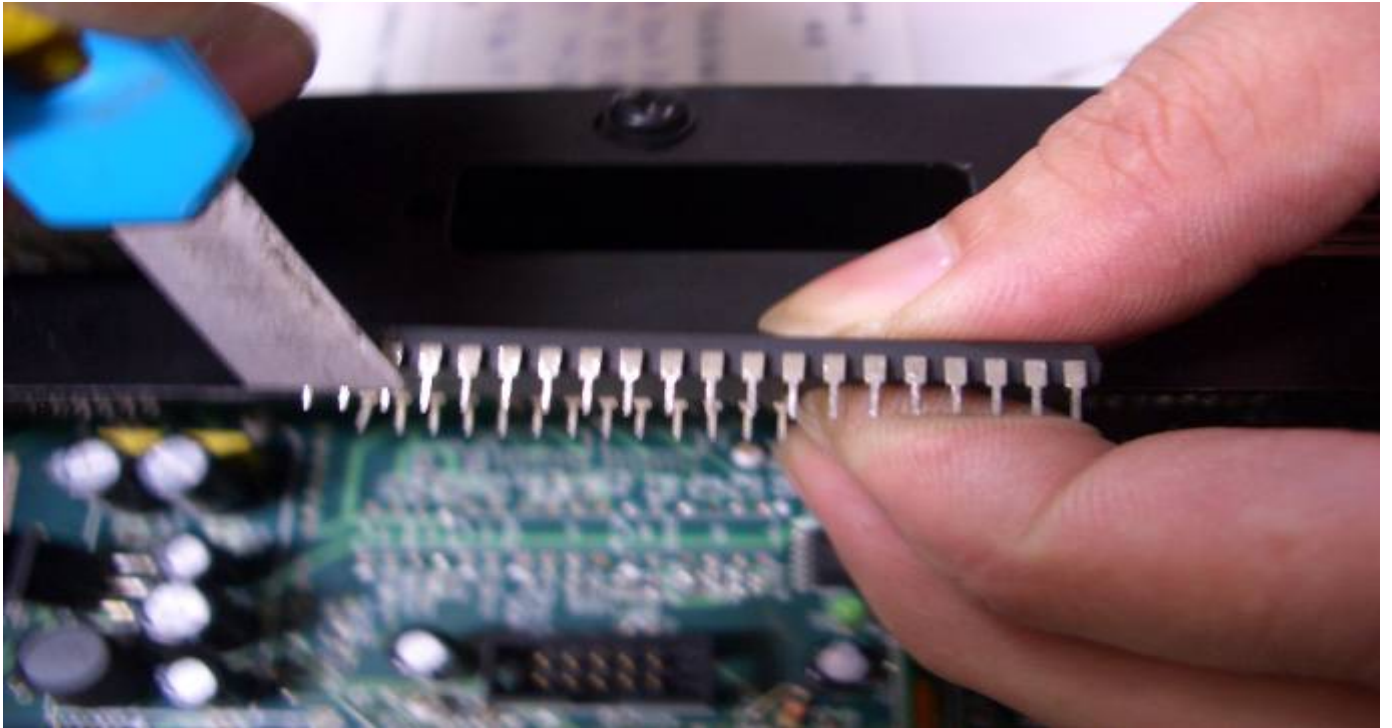
*Remove these 4 screws*





7CPWM(如下圖)





如圖所示，將 IC 取下

*Take off the IC*

請檢查 IC 腳(7CPWM)是否有氧化現象，如果有請用刀片刮 IC 腳，使其光亮避免接觸不良 (如上圖)

In order to avoid bad contact, please check if the pins of IC(7CPWM) has oxidized, if yes, please us knife to scrape it.



依拆開反順序裝回  
(Please re-install it back)

注意事項：1. IC 一邊有缺口，請與板上 Layout 缺口部份對齊插入，且每隻 IC 腳都必須插入，  
2. 排線部分(如圈選處)需注意每隻腳位都有插入

**若上述步驟處理完後，問題依舊，請將此電腦車寄回檢查**

Notice: 1. There is a concave on the IC, please match it with the concave on the layout of card.

Please make sure all pins are well plugged.

2. Make sure all pins of cable bus are well plugged.

**If the situation continues, please send back the computer for further examination.**